



THE FIRST
RETIREMENT COMMUNITY
IN HOUSTON



HollyHall

A Christian Retirement Community



OUR ROOTS RUN DEEP

Welcome to a retirement community rich in history — a place where solid Christian values and principles meet the genteel warmth of a gracious and well deserved lifestyle. Situated on 20 wooded acres and featuring pristine facilities arrayed with lush garden spaces, Holly Hall offers beautiful residences with thoughtful amenities. Our committed professional staff serves the needs of our Independent Retirement, Assisted Living and Healthcare residents with kindheartedness and hospitality.

Ideally located within minutes of the world-renowned Texas Medical Center, our community is also close to Houston's premier cultural, shopping and entertainment venues. You'll also find that Holly Hall is very accessible with easy access to Interstate 45, South Loop 610, Highway 288 and the METRORail.



We invite you to stroll our beautiful grounds and experience the character and charm of Houston's first dedicated retirement community. Holly Hall is truly a place that cherishes tradition and history.

*"There's so much history here at Holly Hall.
It's good to be in a place where the past is
honored, but where there's always something
new to look forward to, as well."*

Retirement Your Way

- ◆ A community established on Christian values and principles
- ◆ Weekly worship services with communion served to all throughout our community
- ◆ Over 20 acres of beautifully landscaped grounds arrayed with lush garden spaces, walking paths, a charming gazebo and a putting green
- ◆ Well designed one- and two-bedroom apartments with 9' ceilings and abundant closets
- ◆ Spacious kitchens with full-size refrigerators, stoves and dishwashers
- ◆ Oversized bathrooms featuring walk-in showers, detailed amenities and individual water heaters
- ◆ Available private cottages featuring two and three bedrooms and attached garages
- ◆ Flexible restaurant-style dining, room service and take out dining available
- ◆ Elegant, private dining room available with large window views of our spectacular garden
- ◆ A full-time Resident Life Enrichment Coordinator maintaining a calendar full of daily activities, scheduled outings and exercise programs to maintain a healthy body, mind and spirit
- ◆ Health and wellness programs tailored for each participating resident
- ◆ Scheduled transportation available for doctor appointments, shopping, and event outings
- ◆ Salons offering full service for men and women
- ◆ Computer training available for residents who strive to be life-long learners
- ◆ Weekly housekeeping services with additional choices for your carefree lifestyle
- ◆ To your door newspaper delivery
- ◆ Gated entrance with 24-hour security
- ◆ 24-hour on-call maintenance service
- ◆ ***No buy in or entrance fees***



*Independent Living
Floor Plans
on the Next Page*

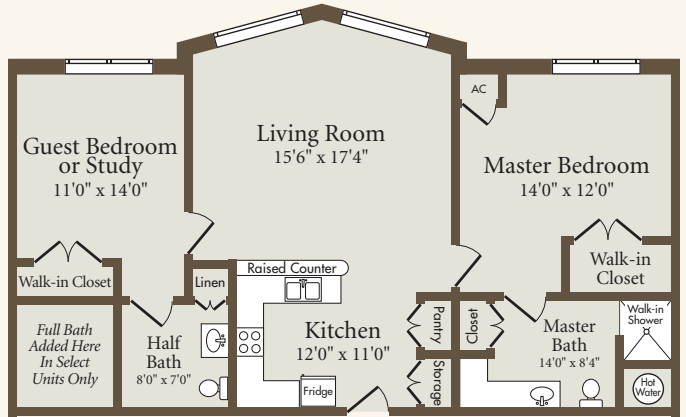
INDEPENDENT LIVING



One Bedroom, One Bath

Approximate Size 770 Sq. Ft.

Monthly Fee \$ _____



Two Bedroom, Two Bath

Approximate Size 1,091 Sq. Ft.

Monthly Fee \$ _____



Main Building Two Room Suite

Approximate Size 470 Sq. Ft.

Monthly Fee \$ _____

Actual floor plans and square footage may vary.

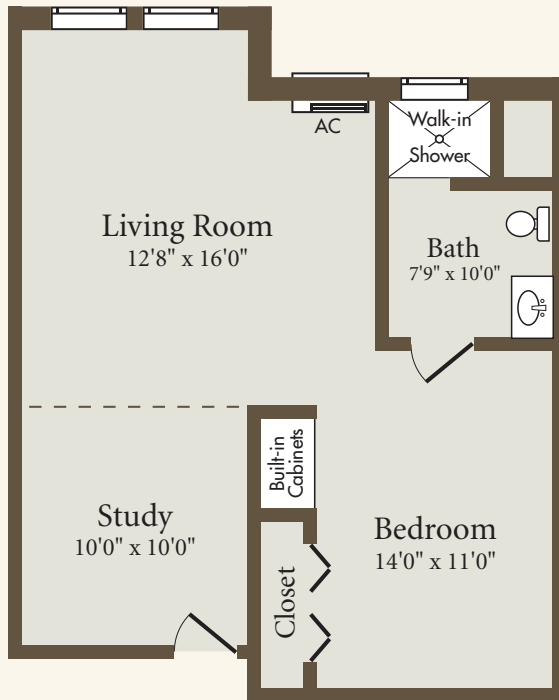
A Gracious Assisted Living Experience

- ◆ A community established on Christian values and principles
- ◆ Weekly worship services with communion served to all throughout our community
- ◆ An on-site team consisting of health professionals, food service, and a Consulting Dietician
- ◆ Over 20 acres of beautifully landscaped grounds arrayed with lush garden spaces, walking paths, a charming gazebo and a putting green
- ◆ Well designed apartments with 9' ceilings and abundant closet space
- ◆ Oversized bathrooms with walk-in showers and detailed amenities
- ◆ Flexible dining program with room service available
- ◆ Garden view Assisted Living dining room serving three complete meals a day with additional snacks and beverages included
- ◆ Weekly housekeeping with personal laundry and linen services
- ◆ A full-time Activity Assistant maintaining a calendar of daily activities, outings and exercise programs to promote a healthy body, mind, and spirit
- ◆ Scheduled transportation available for doctor appointments, shopping, and outings
- ◆ Salons offering full service for men and women
- ◆ Computer training available for residents who strive to be life-long learners
- ◆ On-site Geriatric Physician visits
- ◆ Personalized health assessments for a focused care plan
- ◆ To your door newspaper delivery
- ◆ Urgent call system for your peace of mind
- ◆ Gated entrance with 24-hour security
- ◆ 24-hour on-call maintenance service
- ◆ ***No buy in or entrance fees***



*Assisted Living
Floor Plan
on the Next Page*

Assisted Living *Apartment*



Approximate Size 625 Sq. Ft.

Monthly Fee \$ _____

Actual floor plans and square footage may vary.

Cultivating a Secure and Dignified Environment

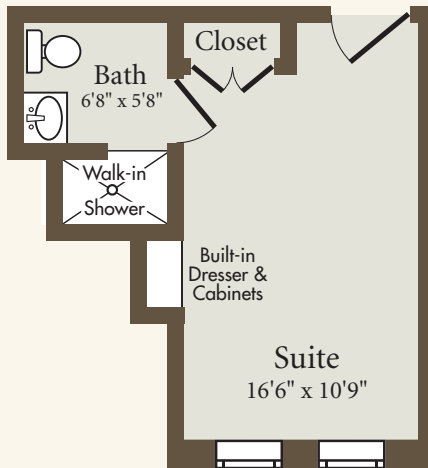
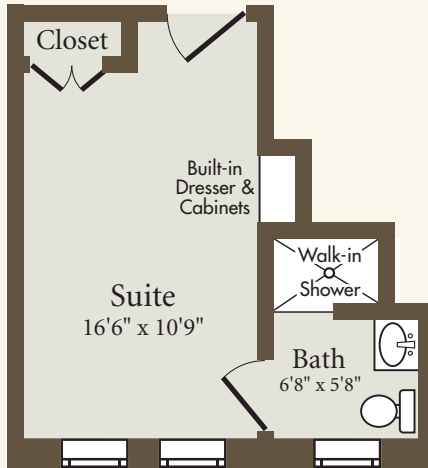
- ◆ A community established on Christian values and principles
- ◆ Weekly worship services with communion served to all throughout our community
- ◆ An on-site team with over 125 combined years of experience that includes a Community Administrator, a Director of Nursing and Assistant Director of Nursing, a Home Health Care Director, and a Food Service Director coordinating with a Consulting Dietician
- ◆ Beautiful gathering areas throughout the community for you, your family and friends to enjoy
- ◆ Garden view Healthcare Living dining room with caring staff members serving residents with dignity and respect
- ◆ Urgent call system for your loved one's security and peace of mind
- ◆ Scheduled transportation available for medical needs
- ◆ A calendar full of daily activities and exercise programs
- ◆ Daily housekeeping services maintaining a healthy and clean environment
- ◆ Salons offering full service for men and women
- ◆ On-site Geriatric Physician visits
- ◆ Personalized health assessments for a focused-care plan
- ◆ **Medicare short-term rehab provider**
- ◆ Gated entrance with 24-hour security
- ◆ 24-hour on-call maintenance service
- ◆ *No buy in or entrance fees*



*Healthcare Living
Floor Plans
on the Next Page*

Healthcare Center

Accommodations



Approximate Size 275 Sq. Ft.

Monthly Fee \$_____

Actual floor plans and square footage may vary.

Patient Centered Care

Holly Hall delivers the same quality of care and compassion to our home based patients as we do for those residents living in our community. It's a commitment to sustaining independence and providing a rich quality of life that's been a hallmark of Holly Hall since our beginning in 1949. We offer an in-home assessment by our staff RN to tailor a managed care plan that will address one's daily living needs. With a staff of professional caregivers offering a wide variety of services 24 hours a day, 7 days a week, we provide the confidence and peace of mind your family and loved one deserves.

Scope of Services:

- ◆ A home health care service established on Christian values
- ◆ Services available to patients 24 hours a day, 7 days a week
- ◆ Personalized plans that address the needs of individual patients
- ◆ RN services
- ◆ Respite for family caregivers
- ◆ Added sense of security for loved ones and family members
- ◆ Assistance with bathing and personal grooming
- ◆ Medication monitoring and administration
- ◆ Assistance in ambulating
- ◆ Thoughtful caregiving addressing the special needs of dementia, stroke and rehab patients
- ◆ Homemaking services including meal preparation, light housekeeping, laundry and grocery shopping
- ◆ Help with answering the door and telephone and collecting mail and the newspaper
- ◆ Escorting to special events, exercise classes, group activities and meals within the community
- ◆ Companionship support that keeps patients emotionally connected through conversation, outings, correspondence and hobbies
- ◆ Errand and transportation service



Sustaining Our Community

For over sixty years, Holly Hall Retirement Community has provided exceptional care for senior adults and has taken pride in the quality of life its residents enjoy. Offering independent, assisted and full-time health care, Holly Hall is dedicated to the physical, spiritual, psychological and social well-being of each resident.

Holly Hall depends on the generosity of individuals, corporations, churches and foundations to sustain those residents who, over time, are not able to cover their full expenses. Holly Hall's supplementary assistance for residents is a remarkable attribute of its level of commitment to the Holly Hall community. Additionally, your support will help Holly Hall provide much needed program enhancements and activities to ensure a comprehensive quality of life for its residents.

Thanks to support from friends like you, residents can rest assured they will receive the same level of attention, regardless of individual circumstances.

Different ways you can support Holly Hall:

- ◆ Cash
- ◆ Stock
- ◆ Bequests
- ◆ Trusts
- ◆ Insurance Policies
- ◆ Matching Gifts
- ◆ Gifts in memory/honor of
- ◆ Volunteering

For information on how you can become more involved at Holly Hall, please contact the Director of Development at 281-936-2802.

Holly Hall is a 501(c)3 organization, and all donations are tax exempt to the fullest extent of the law.



Holly Hall

A Christian Retirement Community

2000 Holly Hall Street | Houston, Texas 77054 | 713.799.9031 | www.hollyhall.org

